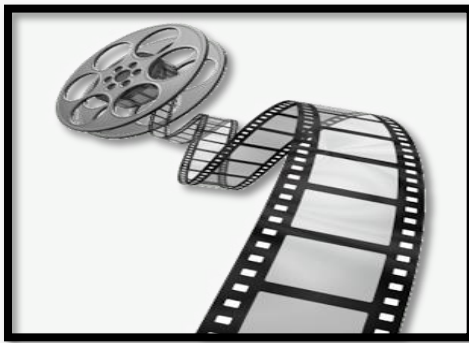


## ***USER MANUAL***

# **Project ON MEDIA ENTERTAINMENT LIBRARY AND MANAGEMENT**



**CS101 project**

**Autumn Semester 2014-2015**

**IIT BOMBAY**

**A project By: Team no.2, Slot 11, Group no. 9**

**Team Members:-**

**1. Ankit (140020028)**

**2. Siddhant (140020008)**

**3. Ashutosh (140020038)**

**TA:-HARSHAD CHAVAN**



**USER MANUAL EDITION 1**

**Release Date:-19 Oct' 2014**



## *NECCISITIES-*

*Some of the Basic features and Functionalities to be taken care of in order to make the Execution of the Program Smooth and Error-free*

- 1. All the data are saved in capital letters, so please avoid using Small Caps Anywhere.*
- 2. As it is Our First Long Code in our Study of this Course and Topic, Hence this is only a Primitive Media Database System.*
- 3. Trivial Errors Such as Providing Wrong Input Should be avoided.*
- 4. In order to run this Program Faster and Smoother, Please close other Apps as Executing a large Database may require large chunks of Available Memory.*
- 5. If a user wishes to exit the program, he/she can do the same by pressing Alt+F4 or when the Program gives an option to Exit.*



## SYSTEM OVERVIEW/REQUIREMENTS

1. GCC COMPILER.
2. 50MB of Hard Disk Space.
- 3.4Mb Virtual Memory.
4. Windows 7 or above/Ubuntu 9.4 or above.

## PROGRAM BASICS

1. Executing the Main Source File Will open the “Home-Page” of the Database from where you can guide yourselves to all the features available in the program.
2. The Basic Aim of this Program is to Provide Descriptive Information about MOVIES/TV SHOWS/AND CELEBRITIES.
3. A huge DATABASE has been created as a Text files and is readily associated with the function which acquire the data about the Movies/TV shows/celebs.
4. A collection of pictures associated are too included so as to make this program more useful.



5. Data File HANDLING has been used extensively which basically is implemented by **classes** and **read()** and **write()** functions.
6. The All-important search function has been defined to carry-out all the searches clearly.
7. The search functions contain many filters which will help the User greatly simplify his/her search.
8. The data has been taken from trustworthy online sources.
9. The rating has also been taken from Online sources and do not contain any personal views.
10. The program is so designed to help/guide you throughout your search.
11. For Error-Free and Smooth functioning, Kindly do not Press any-Button Anywhere except when the program asks you to input a legitimate value.
12. We have worked hard to remove any kind Error/Bug on our own, but it is possible that any error may have crept from somewhere or circumvented our notice/attention.
13. We would Love and appreciate these errors as well as the new suggestions and a cleaner way to perform a task needed in our program.



### References:-

- IMDb
- Rotten Tomatoes
- MetaScore
- Google
- Wikipedia
- Various forums on programming
- Material provided by CS101 faculty
- Our CLTA HARSHAD CHAVAN

