

SRS

Lab- Friday

Group-20

Slot-11B

Team Members:

- | | | |
|-------------------------|-----------|-------------|
| 1. Archie Sachdeva | 145280005 | mathematics |
| 2. Lalithadevi Mogasala | 145280035 | mathematics |
| 3. Rohit Meena | 110110030 | MEMS |

NOTE: SENDING THE DUMMY FILES IN WHICH THE INPUT OUTPUT OPERATIONS ARE UNDERTAKING.

INTRODUCTION:

This is a project on railway reservation system. Which aims at providing information to the passengers regarding their train reservation, cancellation, concession.

SCOPE

1. There are two modes in this project – the administrator mode and the user mode.
2. In Admin mode, you can create detail database, add details, display details, perform user management functions and display passenger details.
3. . **The password is “myproject”**. If you enter the wrong password, it displays the message – “You are not permitted to login.”

PURPOSE

Following will be displayed on the screen

- 1.Admin mode
- 2.User mode
- 3.Exit

Enter your choice

After entering your choice go through the following sections depending upon your choice

1.Admin mode- following text will be displayed on screen and user has to respond to that text

ADMINISTRATOR MENU

- 1.Add details
- 2.Display details

Enter your choice

User mode

The user mode has various options for the user as follows:

1. DISPLAY TRAIN DETAILS(based on boarding ,destination)
2. RESERVATION OPTION
3. CANCELLATION OPTION
4. Also can he access LIST OF ALL THE TRANS and ther details

Enter your choice

Now user has to choose an option and go through the following sections depend upon the choice

user has to enter train number and following text will be displayed on screen

- 1.Train name
- 2.Boarding point
- 3.destination point
- 4.fare

If user wants to choose reservation option then following text will be displayed on screen and user has to respond to the text

Enter the details as follows

- 1.train name
(Respond) train name

- 2.Boarding point
(Respond) boarding point

- 3.Destination point
(Respond) destination point

- 4.Now details for passengers (name)
(Respond) passenger name

9. concession category following options will be displayed

- a.Military
- b.Senior citizen
- c.Children below 5 yrs
- d.None

Choose option to which concession category user belong's to

If user wants to choose Cancellation option then following text will be

displayed on screen and user has to respond to the text

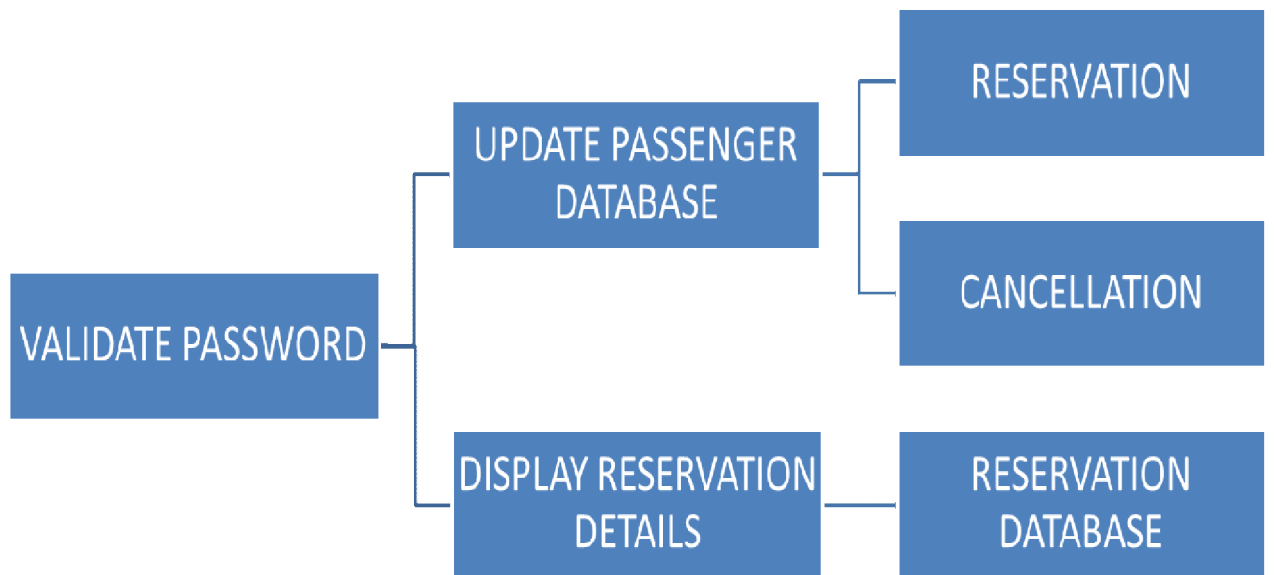
Enter the details as follows.

2. Train number
3. Train name
4. Boarding point
5. Destination point

Then it will display YOUR CANCELLATION WAS SUCCESSFUL

FOLLOWING IS THE FLOW CHART REPRESENTING THE LOGIN SYSTEM





TICKET RESERVATION DETAILS WILL B SHOWN AS FOLLOWS

Ticket Reservation			
Train No	2952	Train Name	MUMBAI RAJDHANI
From	NDLS	To	MUMBAI CENTRAL (BCT)
Date	02-Jul-2007	Class	AC 2-tier sleeper (2A)
Boarding Point	NDLS	Reservation Upto	MUMBAI CENTRAL (BCT)
Quota	General		

SNo	Name	Age	Sex	Berth Preference	Food Preference	Senior Citizen	Loyalty No
1	Raj Chopra	41	Male	Lower	Veg	No	
Ticket Amount:		Rs.2005.0					
Service Charges:		Rs.60.0 (Including Service Tax)					
Total Amount:		Rs.2065.0					
Total Availability at		IST 22:25					
AVAILABLE- 0086		AC 2-tier sleeper(2A)					

HEADER FILES :

- `#include<stdio.h>`
- `#include<stdlib.h>`
- `#include<iostream>`
- `#include<fstream>`
- `#include<cstring>`

FUNCTIONS USED:

Following are the functions that are used in the program:

These functions are quite easy to understand as their name would suggest and as described in the details about the program earlier.

`void database();`

`void train_list()`

`void show (string startingPoint , string destination)`

`void passenger(string passname , string start ,string endPoint, string tname, int fare)`

`int concession(int fare)`

`void cancellation()`

`admin()`

`user()`

USER FRIENDLY

using switch cases we have tried to carry forward the appropriate steps which are required. Be it a user or an admin the program provides the options to choose which makes it user-friendly.