

# Knowledge, Society and Culture

*for India as a developing people*



Milind Sohoni  
Head, CTARA IIT Bombay  
[sohoni@cse.iitb.ac.in](mailto:sohoni@cse.iitb.ac.in)

# What we know

- | Increasing inequality
- ▢ Climate change and increasing risk
- ▢ The role of science and technology
- ▢ *An emerging mono-culture!*
- ▢ Must Knowledge be conducted this way?

# Today

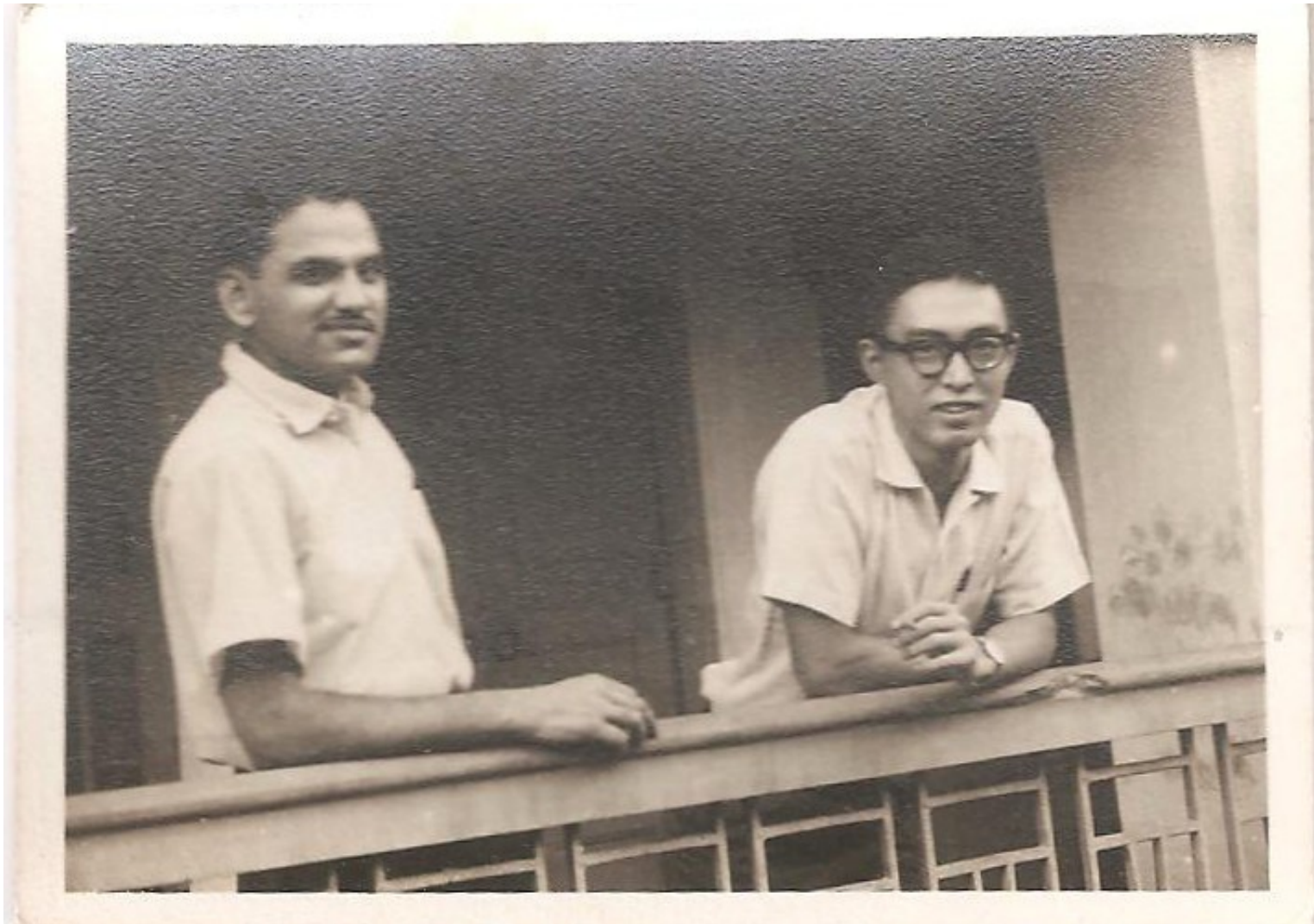
- Types of Knowledge-personal and systematic
- The development question and how they fare
- *The role of culture- the forging of a new culture!*
- A personal (and un-publishable) narrative

# 50 years ago in Nasik





# The Meticulous Engineer The Meticulous Singer



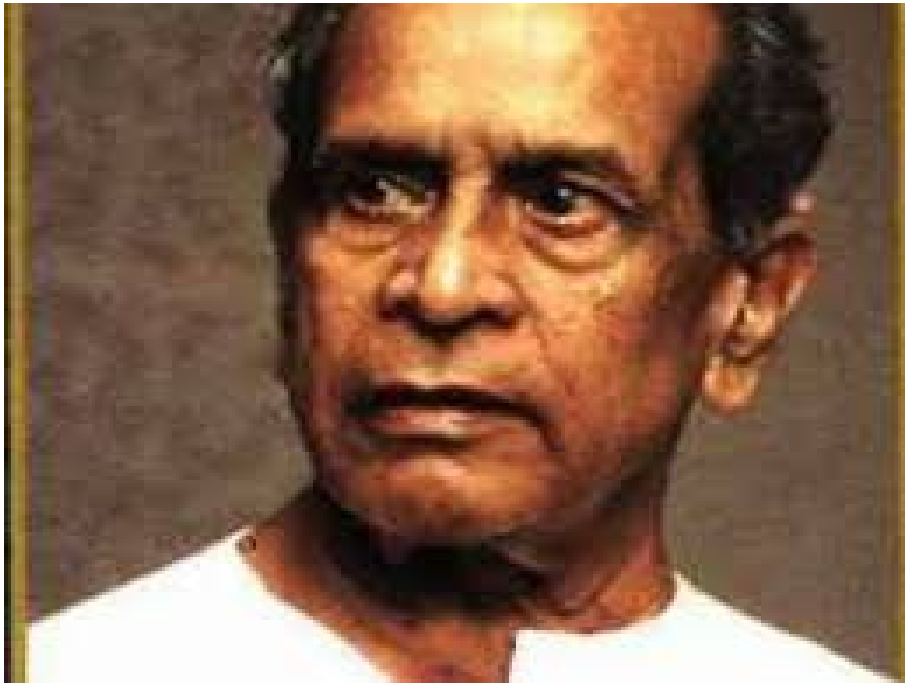
What if I hide as a मोगरा in the  
माळी's (caretaker's) garden? How  
will you find me?

I will become a जाई. माळी baba will  
string us together in a हार garland.  
That is how I will find you.

# A saint

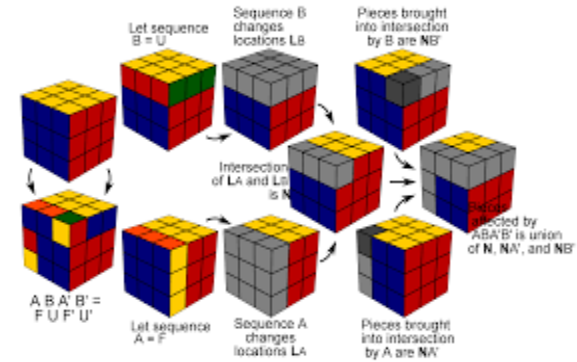
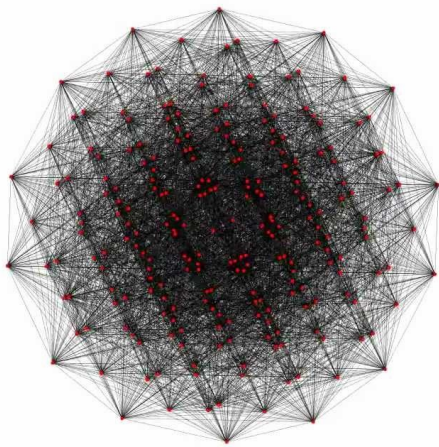
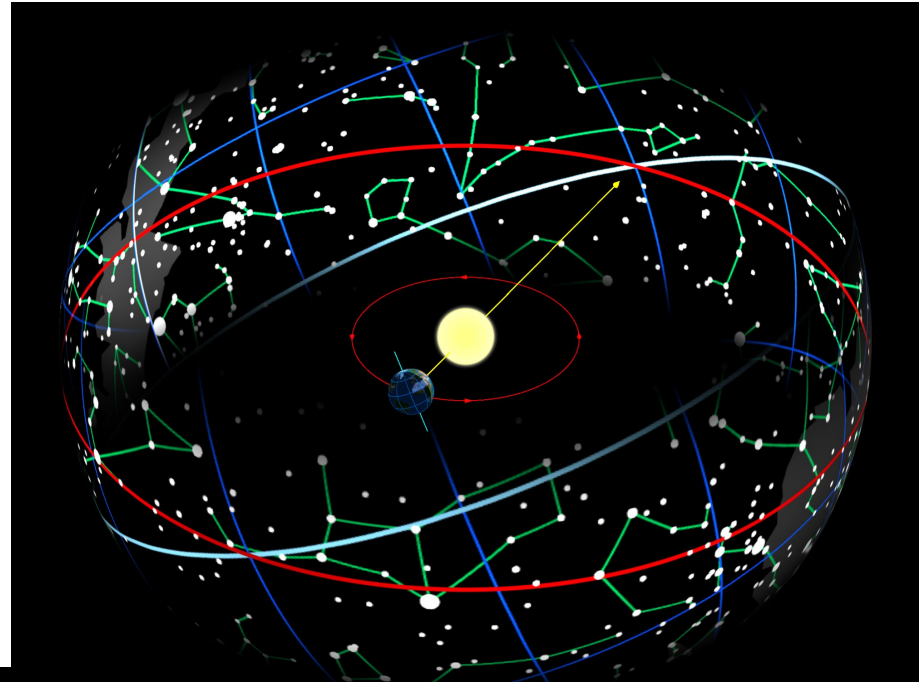
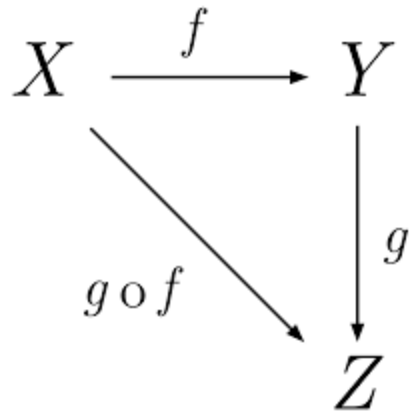


# A listener in Mumbai



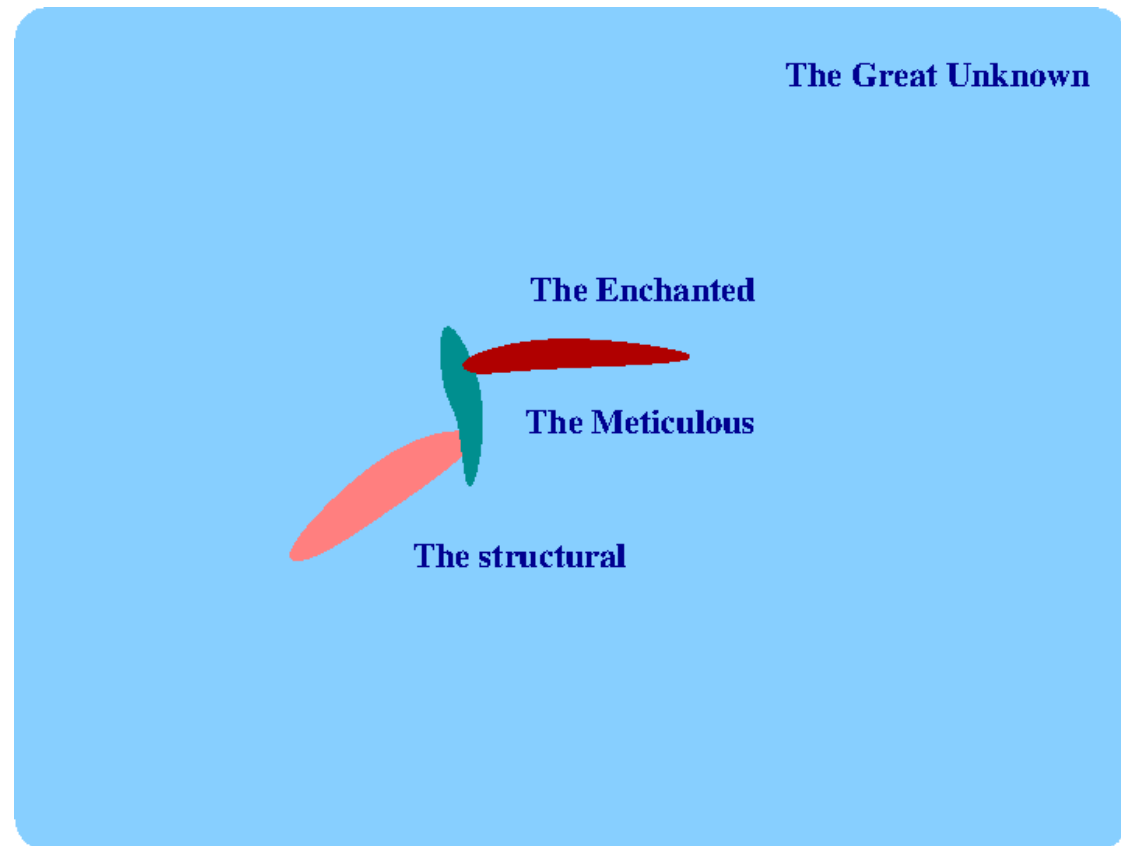


# Structure and Correspondences

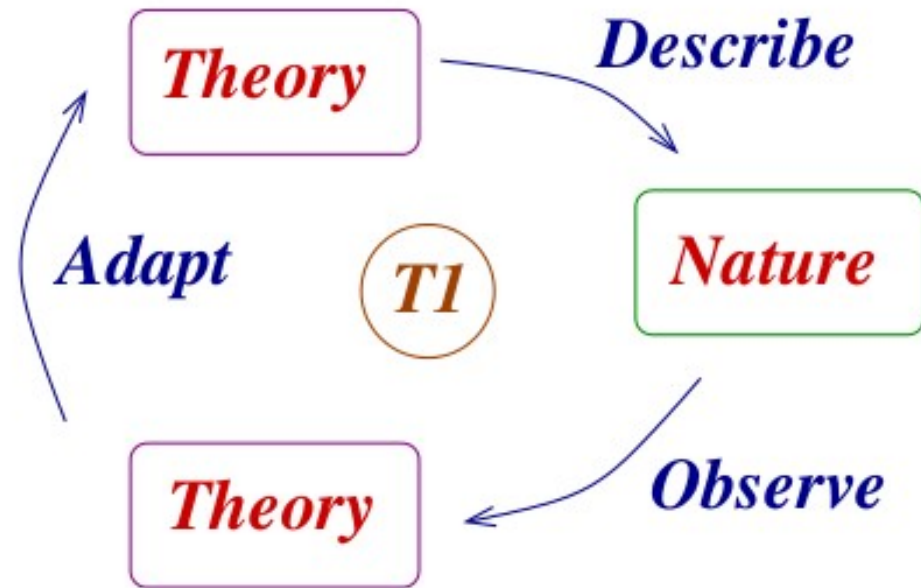


# At 17

54 kilos, three *personal*  
representations



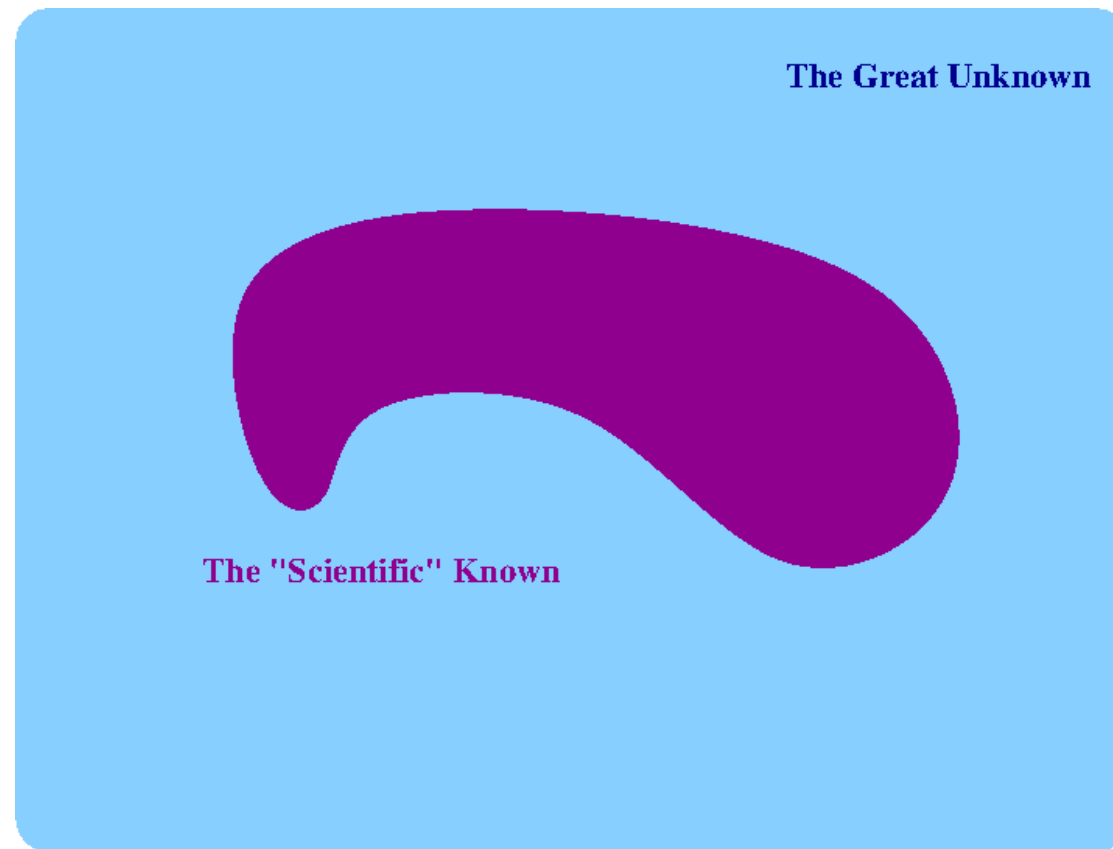
# Science



## *Properties*

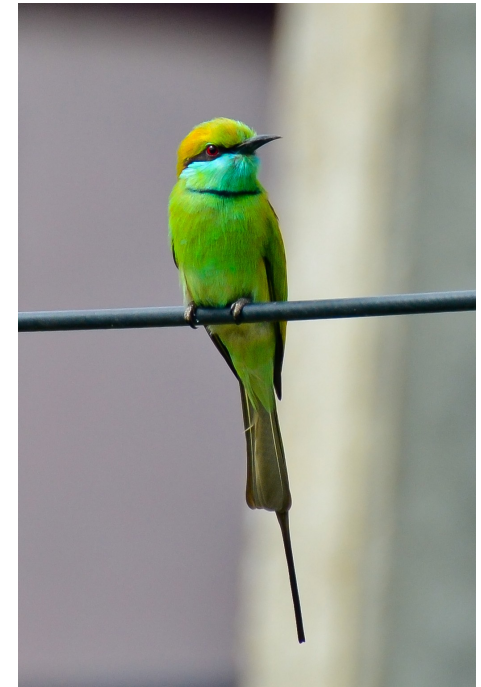
- ▮ Outcome- Theories, causality.
- ▮ Leads to technology
- ▮ Social content-Aesthetics and argumentation
- ▮ Systematic-expensive experimentation

# Big Science





# Natural History



# The culture of natural history





# Treks





# After several years

How do we explain  
this?

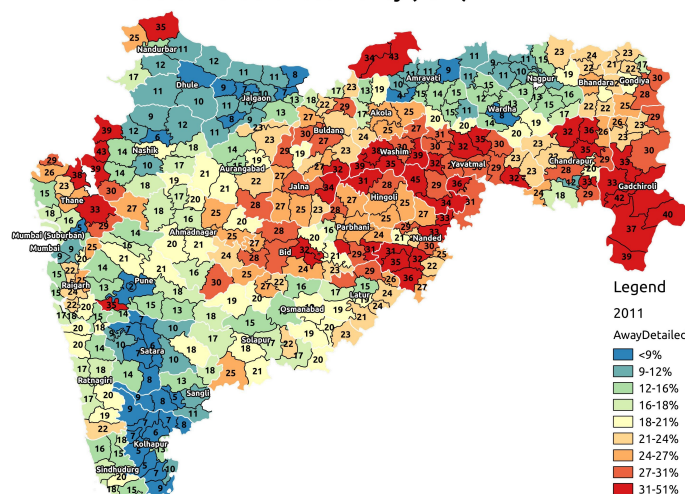




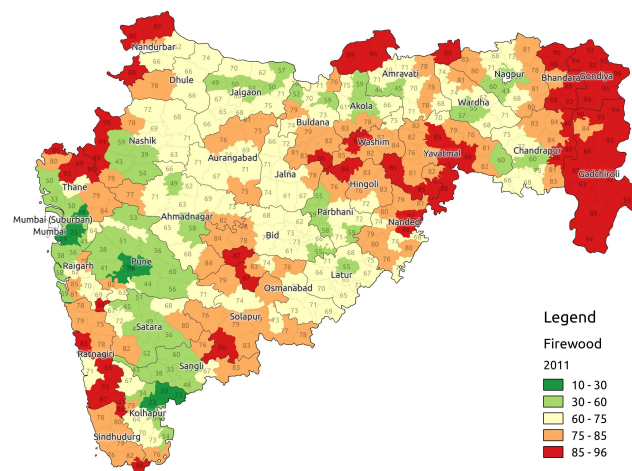
# Severe stress in key areas



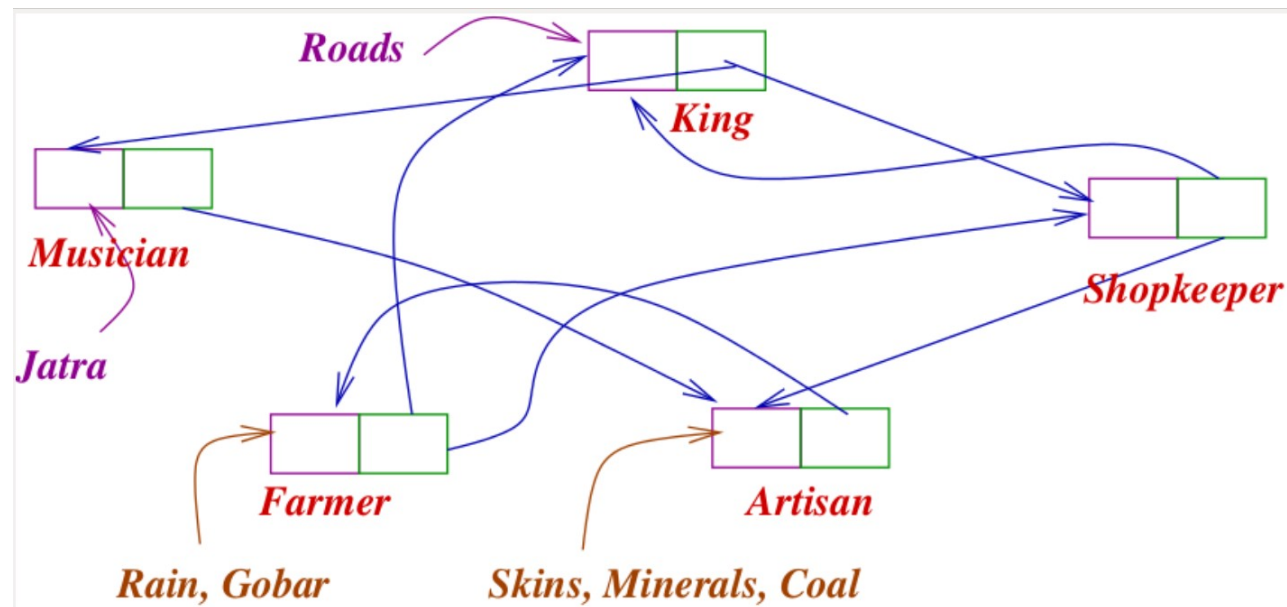
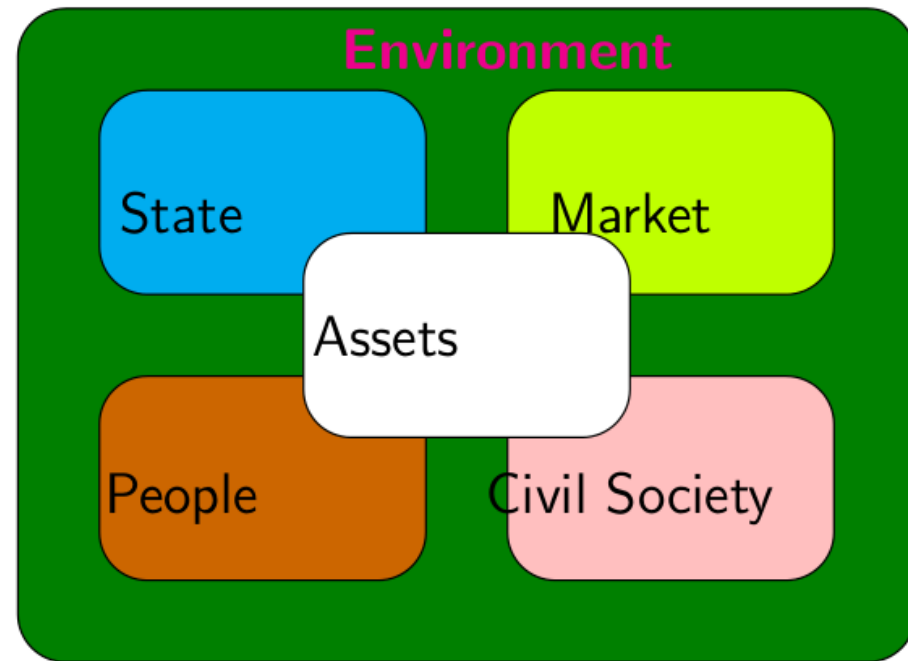
Percentage of Rural Households with Primary Source more than 500m away (2011)



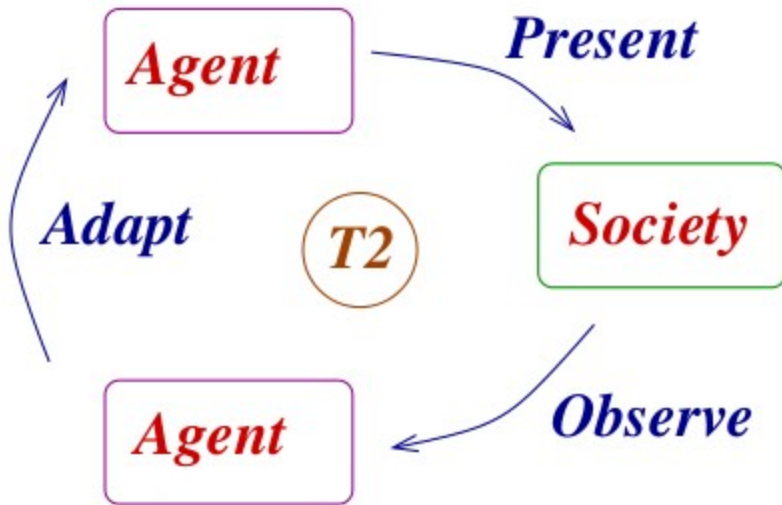
Percentage of Rural Households cooking with Firewood (2011)



# Society



# Agents

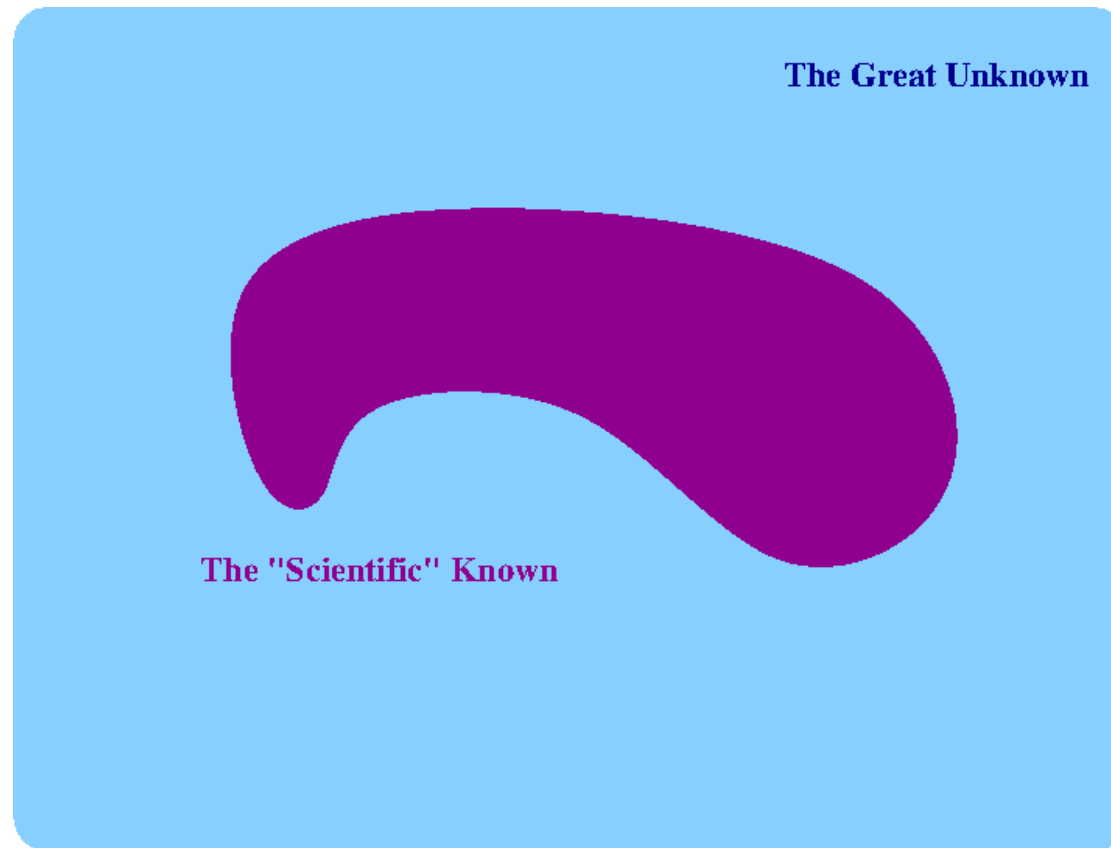


Knowledge

*Sound and  
Rigorous*

- | A pays B to deliver to A
- | A pays B to deliver to C
- | Examples Cobbler-Teacher-Tehsildar

# Ask the scientist





# Everything is known!



- ▯ Scientist-corruption, backwardness
- ▯ Social Scientist-class, gender and caste
- ▯ Economist-market failure

# But is this true?

## What is science made up of?

### Subject of science

Combustion, nano-electronics

### Process of science

skills of observation, documentation,  
argumentation, experimentation

- | New experiment

- *Which is the best chulha in the village?*

# Dhaulvalli



## *What happened*

- 7 wadis, 5 best chulhas-lots of arguments
- Boys and girls visited each other homes and took measurements
- Lead to better chulhas? Role-models?
- *Separate the cultural from the scientific?*

# CTARA's intervention

Twisted tape pack.

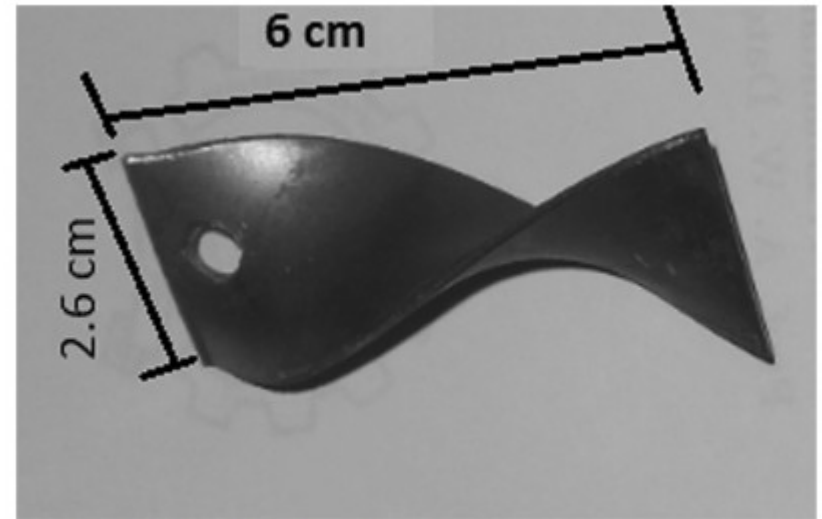
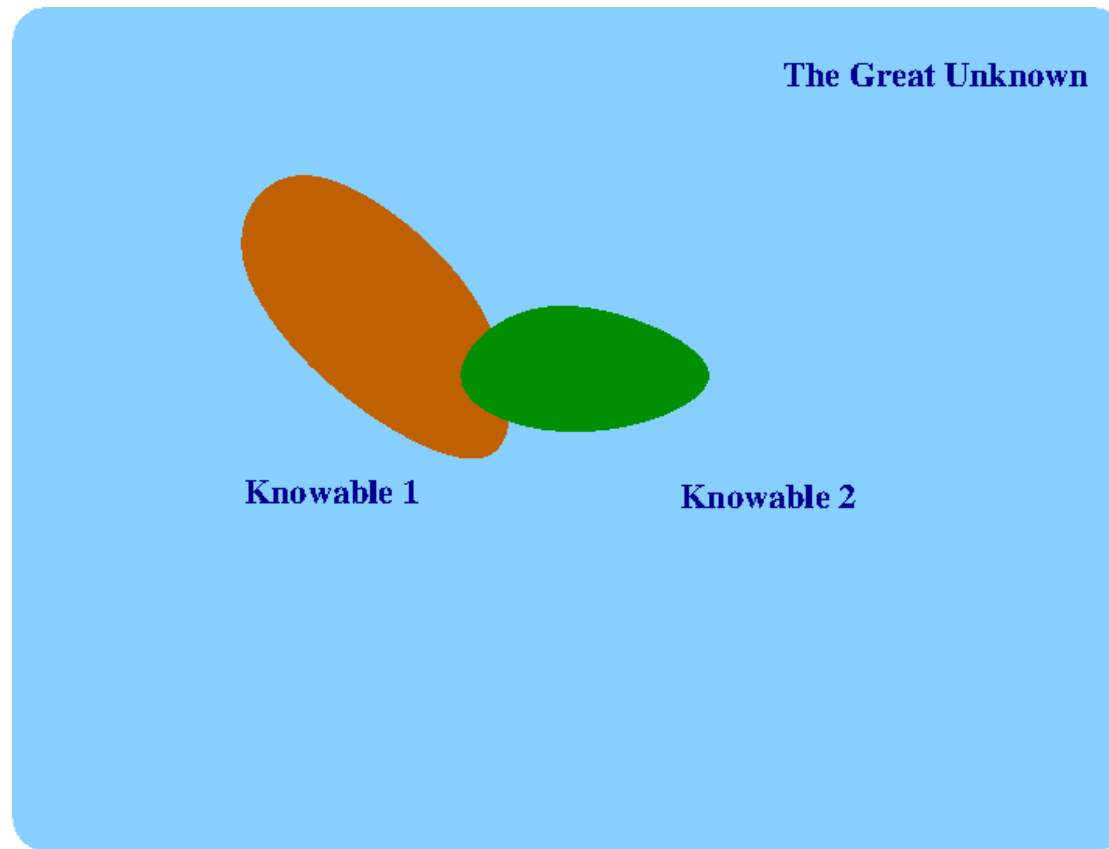


Figure 5 A twisted mild steel plate.

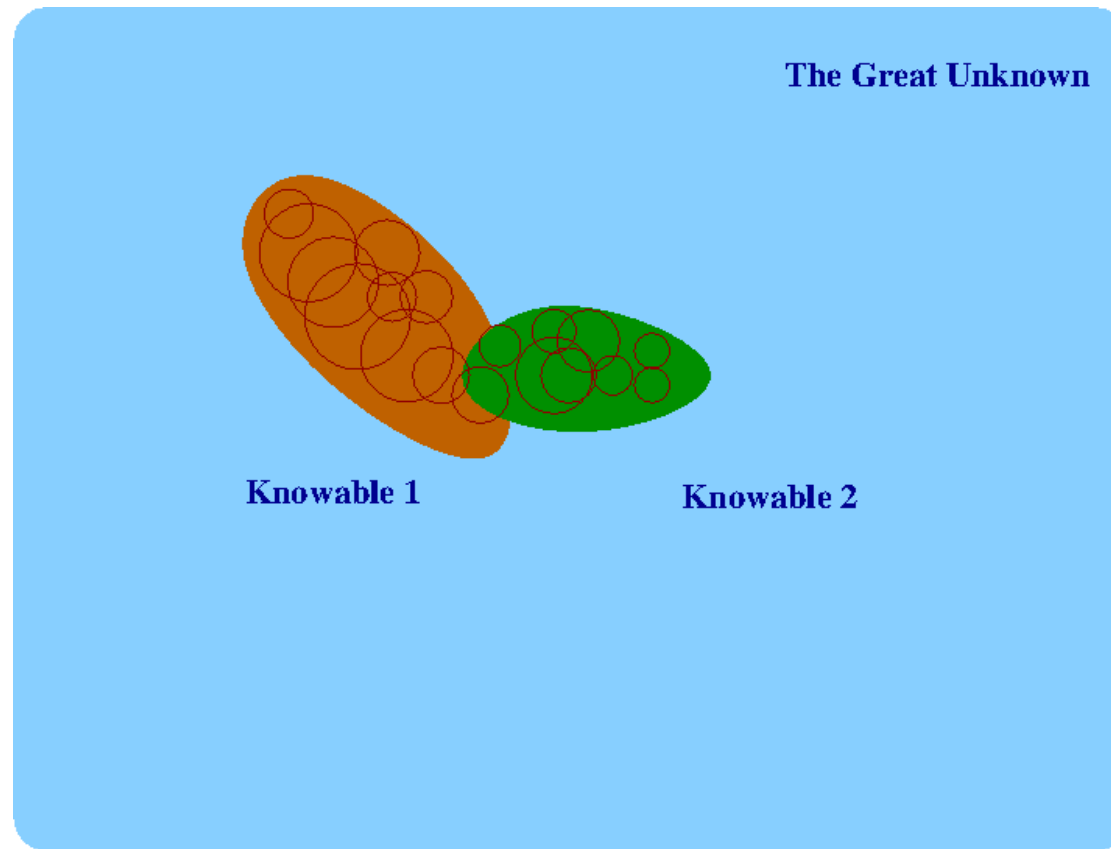
Increased  
efficiency, less  
soot.



# In fact...quite possibly



# In fact...quite possibly





# Another System-Markets



# Markets

- ▯ commodity (utility)  
not cultural artefacts
- ▯ Money-price as  
signal
- ▯ anonymous,  
instantaneous,  
ahistorical
- ▯ *Beliefs*
- ▯ Rational and fair
- ▯ Efficient



# How does it play out



- *Packaged Wafers Rs. 5 for 30gm, Rs 8 for 50gm*
- Money going out-coming in as dole or low prices for rice

## Hindustan Lever 2014 Annual Report

Revenues	27,000 crores
Profits	3,000 crores
Sub-contract	9,000 crores
Salaries	1,500 crores
Transport	1,500 crores
Royalties	900 crores
Marketing	3,000 crores



# How do we reverse this?



Can women of Dahulvalli not make wafers?

Quality, Hygiene-better machines and processes

Trust, confidence, role models

Same as what runs community services!

How does a community serve it self better?

# What runs the modern Big-System?

## Branding

- | Support to mobility
- Suspension of discernment
- Eventually consumable, part of identity

## ▫ Elite Agency

- Highly productive systems: clever people to operate.
- **Elite Agents**-iconic scientists, innovators, artists
- Elite identification
  - | Harvard, MIT, IIT, UPSC
- Put In charge of big systems
- **All benefit!**

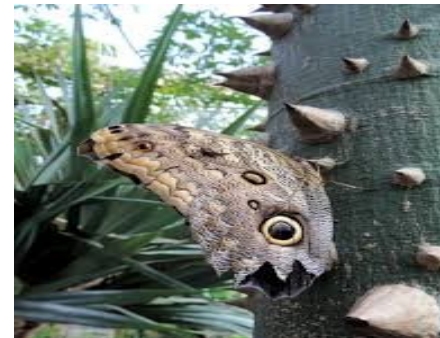
# In Reality

- ▯ Wasteful, Unsustainable, inequality wired-in
- ▯ Aspirational dysfunction, inimical to community action
- ▯ Turns the rest of us into alienated consumers
- ▯ Loss of empiricism. Loss of coding and transmission of knowledge. **Loss of culture!**



# How does a community serve it self better?

- ▮ More diverse roles for the familiar
- ▮ More give and take across time, more history
- ▮ More comprehension
- ▮ **More practice and culture!**



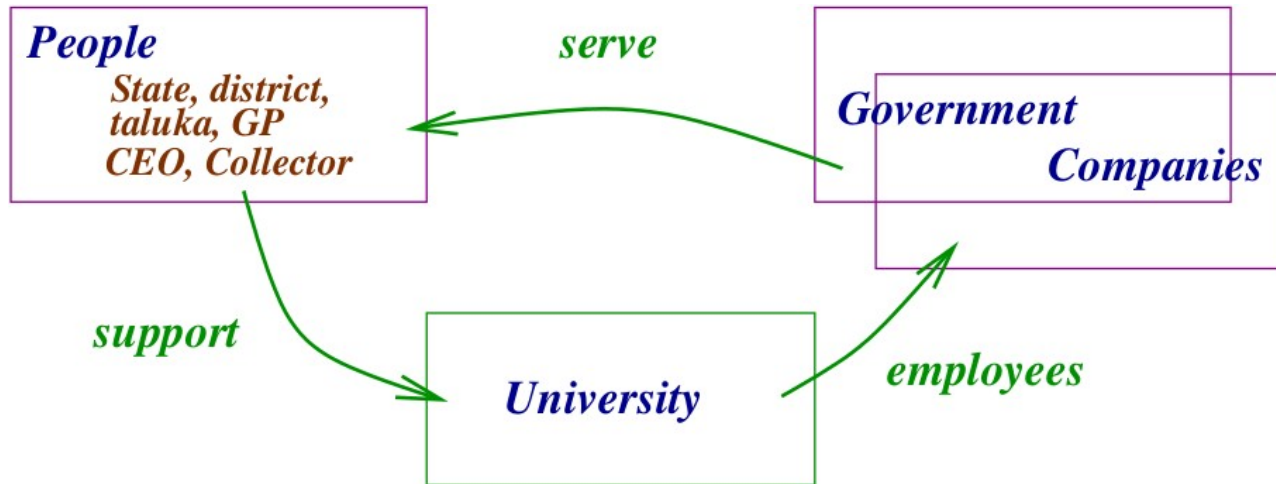
# What to do?

- **Massive Decentralization right down to taluka level-governance, higher education**
- Give people back their language, their *shastra* and their *sahitya* and *its methods*
- Human practices and empathy as the guide to teach social and physical sciences
- Comprehension of the structure of society
- **Rehabilitation of the seasons and natural history**
- Production of role models

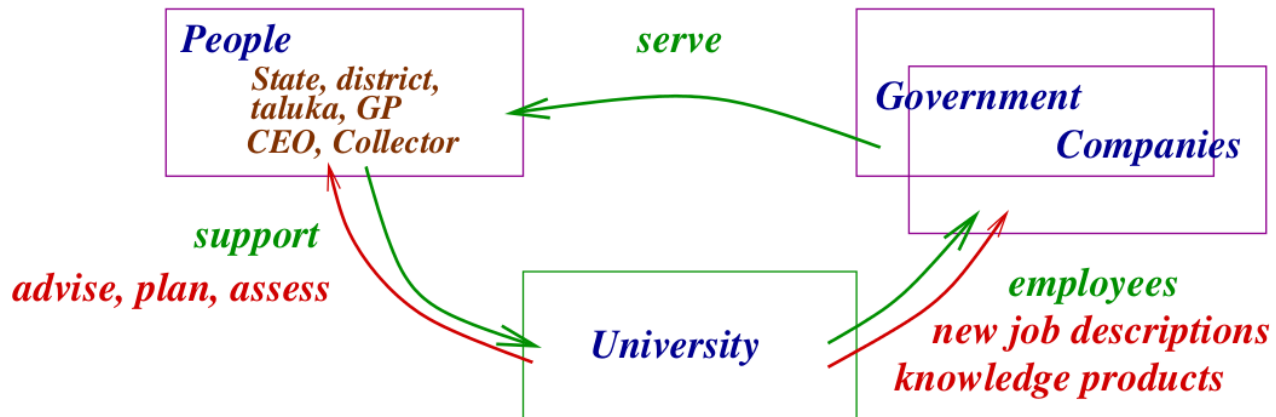
Different interpretation of agents and  
knowledge

Different Vision of the University

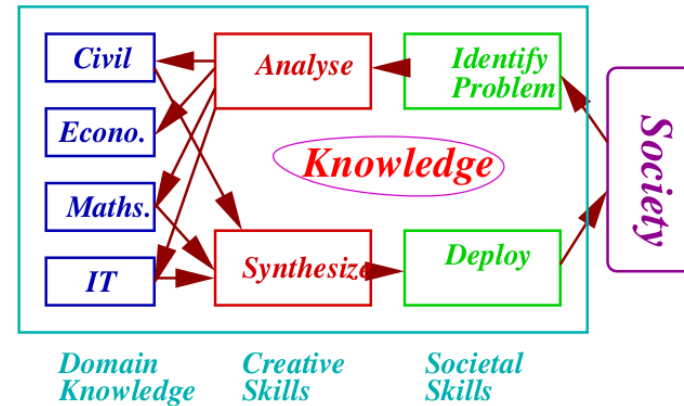
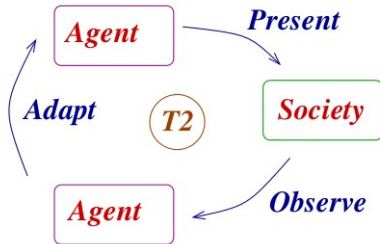
# University-The Current



## A modest beginning: University-as a civil society institution



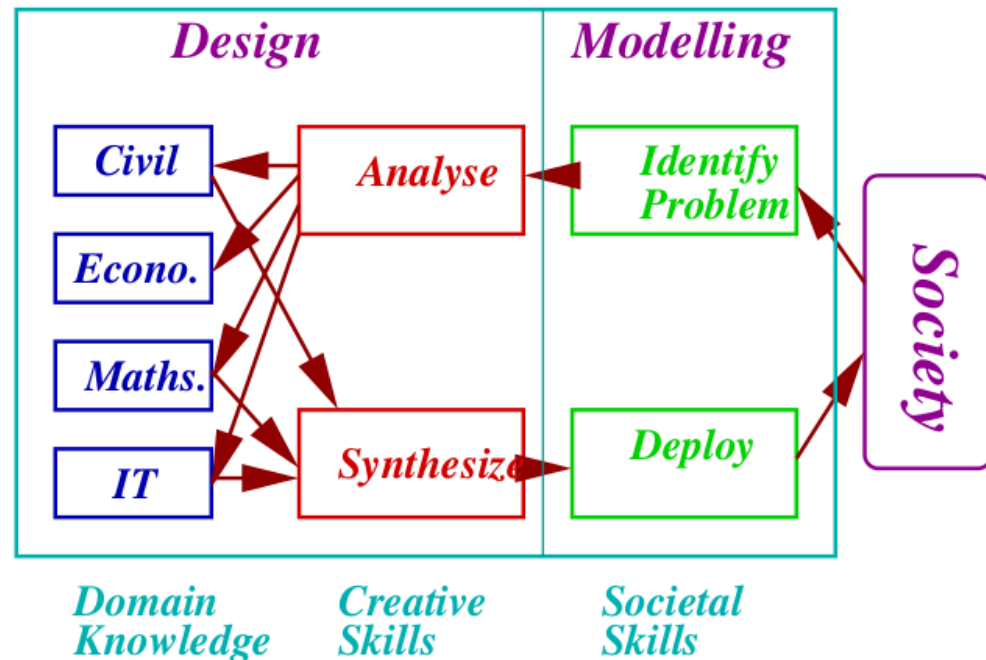
# The Knowledge of Engagement



## The Design of CTARA

- ▯ A new direction and not in opposition
- ▯ A recipe for the bottom 80% to serve themselves
- ▯ **Very clever!**

### The Development Professional

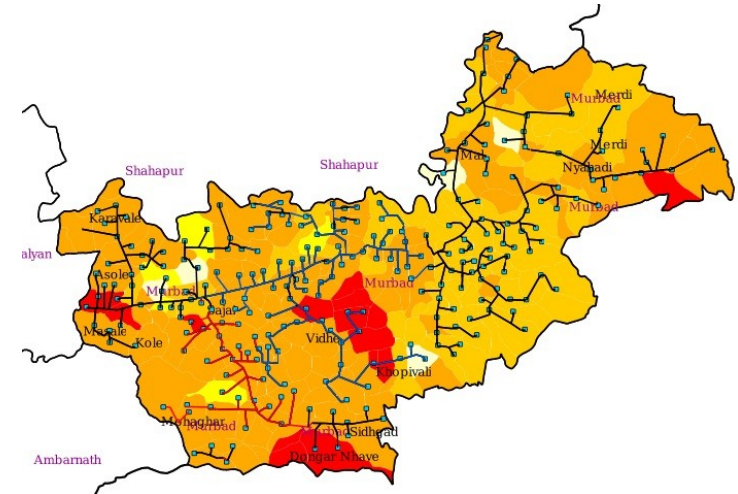


# New Knowledge, New Mechanisms

**Core values:** Problems of the bottom 80%. **Deliver value!**

## Professional Programs: inter-disciplinarity, field work, development perspective and core sectors

# Creation of the Development Professional



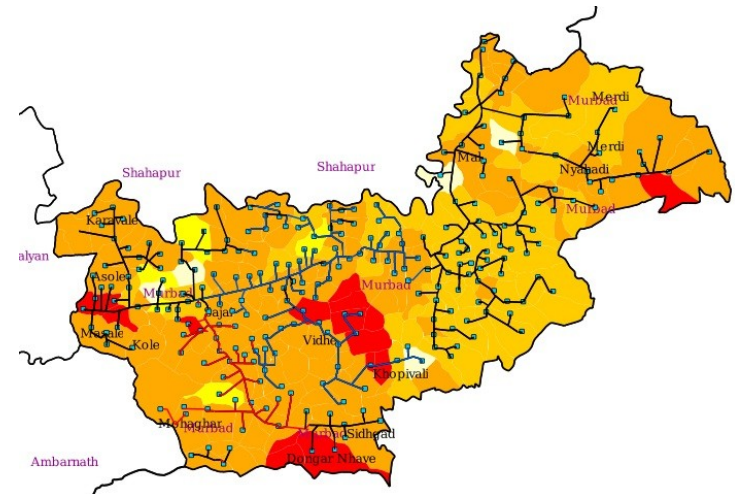


# Areas of work

**Core sectors:** Water,  
Agriculture, Energy, Environment

Concrete problems:  
Engagement, case-studies.

Plans, designs, feasibility studies,  
analysis, gadgets, systems.





# Ultimately-Towards a convivial society

- *The personal-experiential*
- *The systemic-methodological*
- *The subject matter-practices*
- *The mystery resolved-choice!*



- *But there is only one way-Culture as growth*
- A Human Weakness
- More secure, More certain, less drudgery=agriculture
- Inherent bureaucracy
- **Culture of the government servant!**
- **Allure of the big system**

Finally, at the personal level



***Re-enchantment-Hard Work***

# Thank You

